

OPERA GALLERY



# Kiaf SEOUL

03-07 September 2025

Booth B09

Coex Exhibition Center  
513, Yeongdong-daero, Gangnam-gu, Seoul, South Korea

## Featuring

Manolo Valdés

Ron Arad

Tracey Emin

Pieter Obels

Anselm Reyle

Anthony James

George Morton-Clark

Thomas Dillon



**Manolo Valdés**  
b. 1942

*Matisse como Pretexto III*  
2021

Mixed media  
Signed on the reverse  
173 x 203 cm | 68.1 x 79.9 in

PROVENANCE  
Artist's studio



**Manolo Valdés**  
b. 1942

*Untitled*  
2022

Glass and steel  
Unique piece  
Inscribed 'AG' on the back of the head,  
at the bottom

76.2 x 73.7 x 43.2 cm | 30 x 29 x 17 in

PROVENANCE  
Artist's studio



**Ron Arad**  
b. 1951

*Big Easy (crystalline) Olive*  
2023

PROVENANCE  
Artist's studio

Crystalline resin  
Edition of 5

92 x 132 x 80 cm | 36.2 x 52 x 31.5 in



**Tracey Emin**  
b. 1963

*What Colour is a Kiss X*  
2018

Neon (warm white, coral pink)  
Edition: 2/3  
  
85 x 201 x 7 cm | 33.5 x 79.1 x 2.8 in

PROVENANCE  
Private collection, Brussels



**Pieter Obels**  
b. 1968

*Why can't I be you?*  
2024

PROVENANCE  
Artist's studio

Corten steel on wooden base  
Unique piece

165 x 90 x 65 cm | 65 x 35.4 x 25.6 in



**Anselm Reyle**  
b. 1970

*Untitled*  
2020

Mixed media on burlap, acrylic glass  
  
103 x 89 x 21 cm | 40.6 x 35 x 8.3 in

PROVENANCE  
Artist's studio



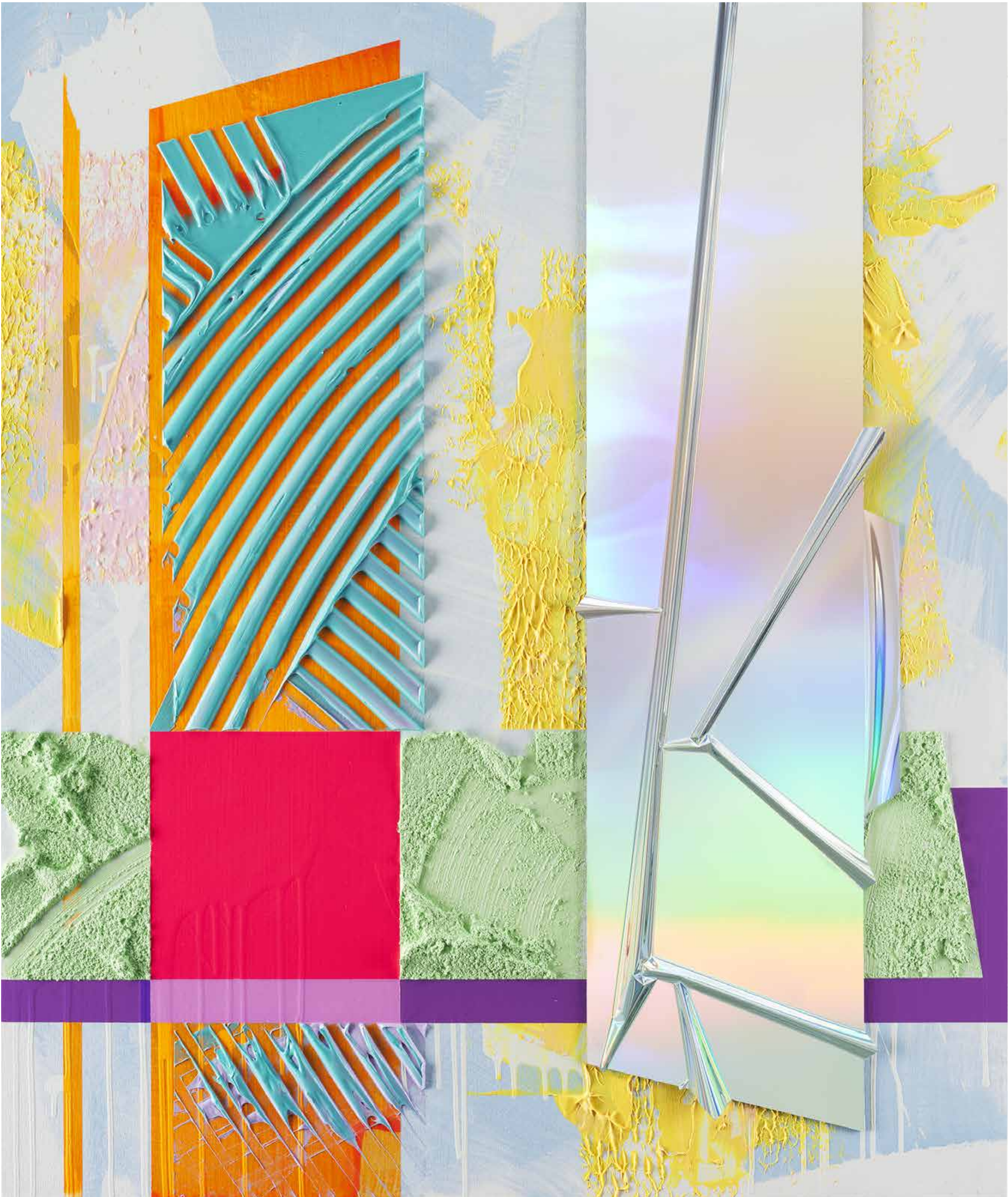
**Anselm Reyle**  
b. 1970

*Untitled*  
2024

PROVENANCE  
Artist's studio

Mixed media, neon, cable, acylic glass

174 x 153 x 30 cm | 68.5 x 60.2 x 11.8 in



**Anselm Reyle**  
b. 1970

*Untitled*  
2025

Mixed media on canvas

87 x 73 cm | 34.3 x 28.7 in

PROVENANCE  
Artist's studio



**Anselm Reyle**  
b. 1970

*Untitled*  
2025

Mixed media on burlap, chrome optics

87 x 73 x 4 cm | 34.3 x 28.7 x 1.6 in

PROVENANCE  
Artist's studio



**Anselm Reyle**  
b. 1970

*Zombies Never Die*  
2025

PROVENANCE  
Artist's studio

Glazed ceramics, stainless steel plinth

180 x 79 cm | 70.9 x 31.1 in



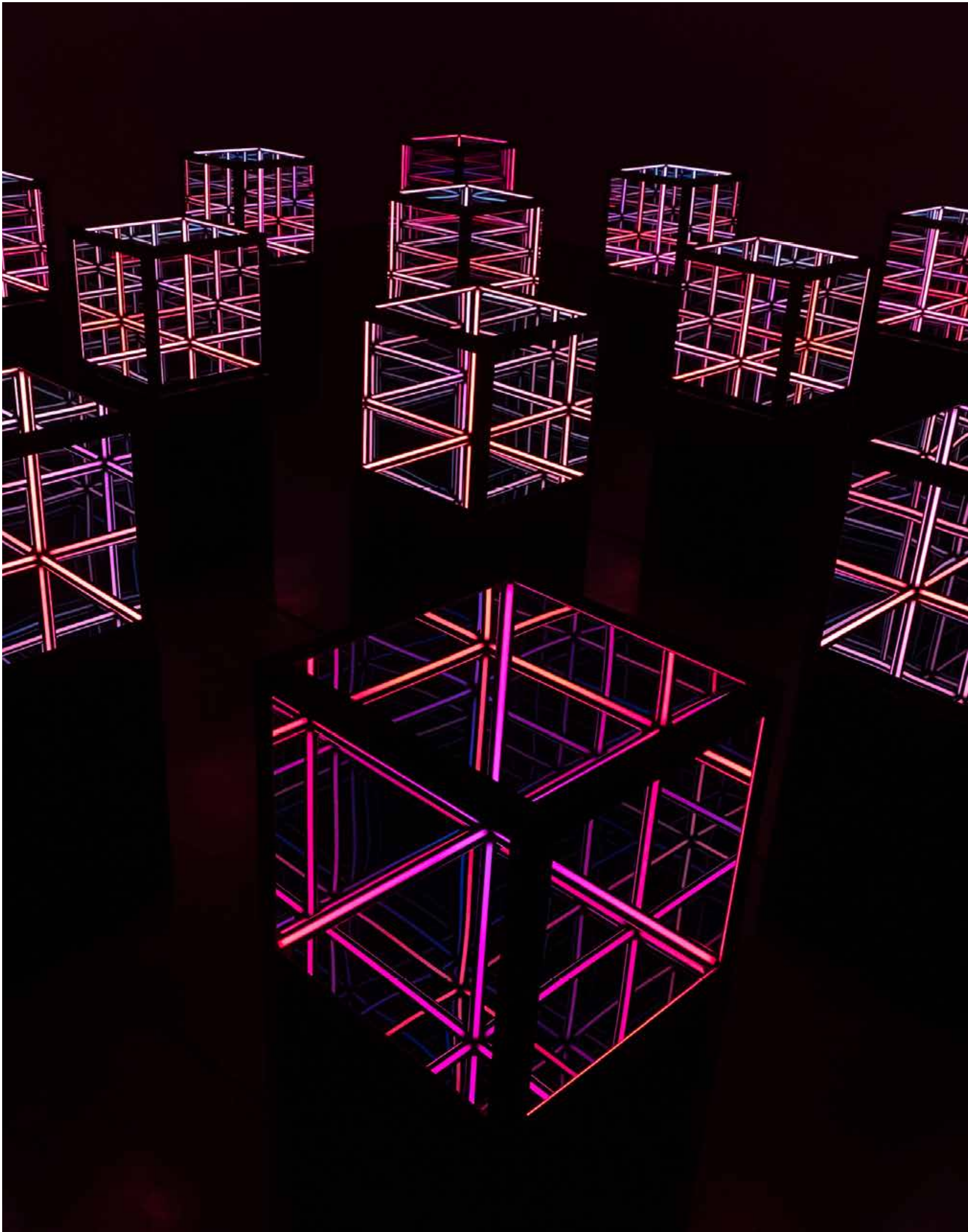
**Anthony James**  
b. 1974

*70" Dodecahedron solar black*  
2019

PROVENANCE  
Artist's studio

Powdercoated stainless steel, glass, LED lights  
Edition of 6

177.8 x 177.8 cm | 70 x 70 in



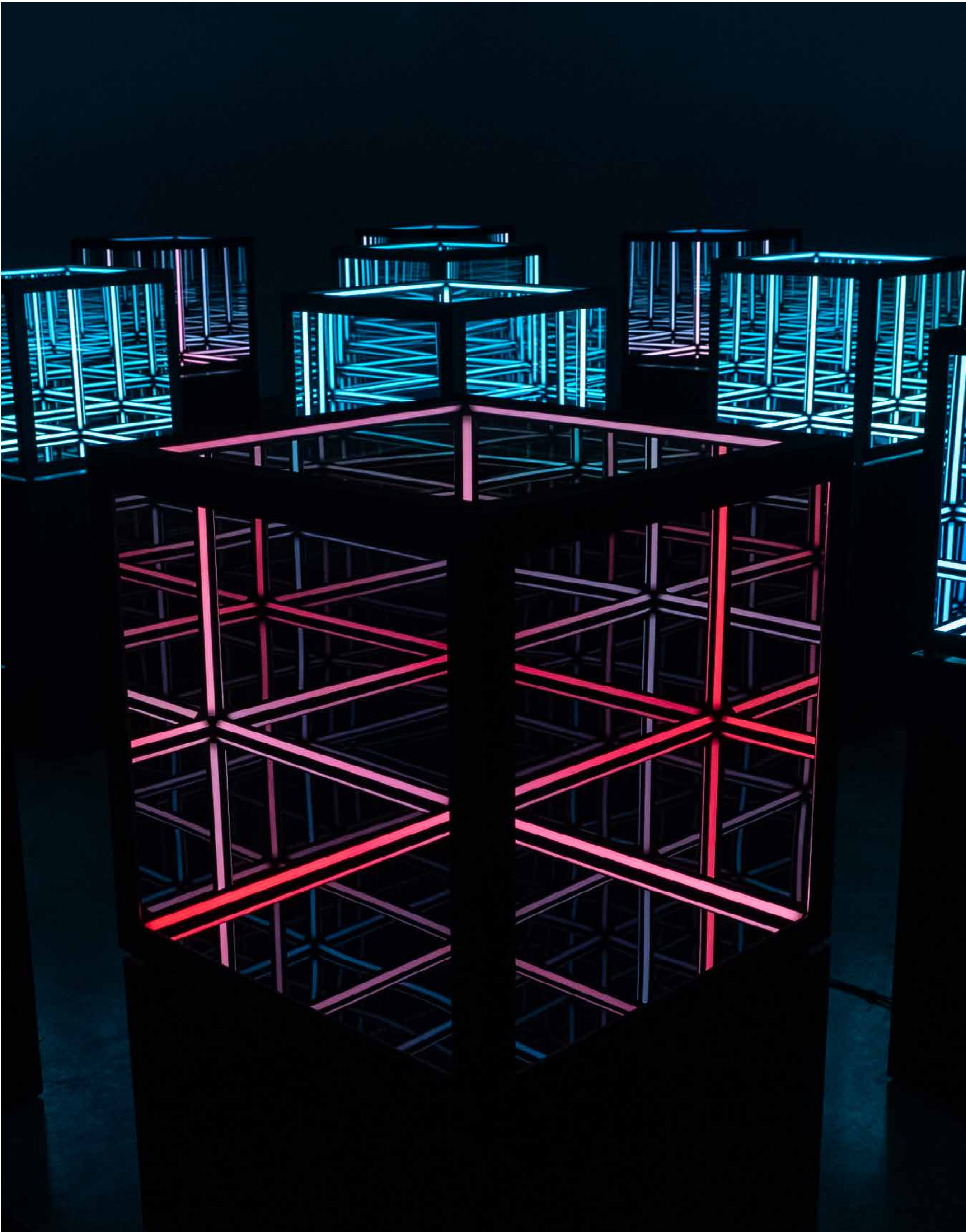
**Anthony James**  
b. 1974

*Lightfield Cube 1*  
*(24" Transmorphic Cubes)*  
2021

Stainless steel, glass, LED Lights  
Edition of 24

61 x 61 x 61 cm | 24 x 24 x 24 in

PROVENANCE  
Artist's studio



**Anthony James**  
b. 1974

*Lightfield Cube 2*  
*(24" Transmorphic Cubes)*  
2021

Stainless steel, glass, LED Lights  
Edition of 24

61 x 61 x 61 cm | 24 x 24 x 24 in

PROVENANCE  
Artist's studio



**George Morton-Clark**  
b. 1978

*Tension Live in Soft Places*  
2025

Oil and acrylic on canvas

150 x 120 cm | 59.1 x 47.2 in

PROVENANCE  
Artist's studio



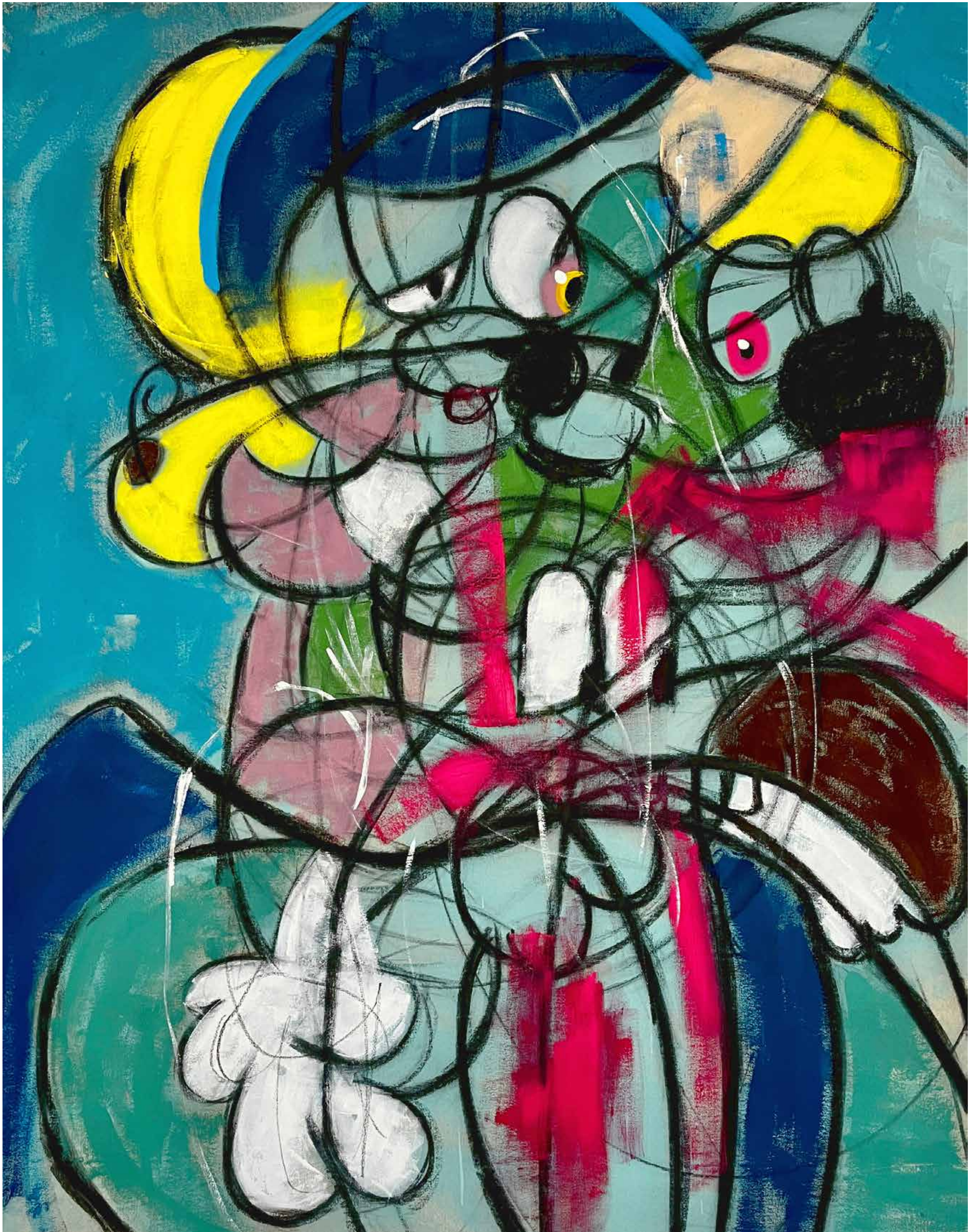
**George Morton-Clark**  
b. 1978

*This is Not a Test*  
2025

Oil and acrylic on canvas

150 x 120 cm | 59.1 x 47.2 in

PROVENANCE  
Artist's studio



**George Morton-Clark**  
b. 1978

*Unfair Circus*  
2023

Oil, acrylic and charcoal on canvas  
Signed on the reverse

170 x 140 cm | 66.9 x 55.1 in

PROVENANCE  
Artist's studio



**Thomas Dillon**  
b. 1983

*Superposition*  
2024

Acrylic on canvas  
Signed and dated on the reverse

203.2 x 203.2 cm | 80 x 80 in

PROVENANCE  
Artist's studio

# OPERA GALLERY

## **Opera Gallery at Kiaf SEOUL**

03–07 September 2025

Booth B09

Seoul COEX Hall A, B, Grand Ballroom

513, Yeongdong-daero, Gangnam-gu, 06164

## **VIP Admission**

Wednesday, 3 September | 11am – 3pm

Thursday, 4 September | 11am – 7pm

## **General Admission**

Thursday, 4 September | 3pm – 7pm

Friday, 5 September | 11am – 7pm

Saturday, 6 September | 11am – 7pm

Sunday, 7 September | 11am – 6pm

## **Opera Gallery Seoul**

5F, 24 Eonju-ro 164-gil, Gangnam-gu 06020

seoul@operagallery.com

T. +82 2 3446 0070